

**Ecological and compatible with healthy living**

Our laminate consists of 95% natural materials – particularly wood – is almost entirely carbon-neutral and is free from PVC and plasticisers. Sustainable flooring that is made for healthy living.

**Natural and authentic**

Modern printing techniques and special embossed surfaces create laminate decors with a deceptively authentic and natural look and feel – especially on products with a synchronous pore structure. The most authentic wood effect among our decor flooring.

**Durable and low-maintenance**

The robust and durable surface prevents the ingress of dust and dirt. The "Diamond Pro" surface finish increases resistance against micro-scratches and abrasion and offers additional protection against wear and tear. That is what makes laminate flooring so hygienic, easy to maintain and durable.

**Colour-fast**

Thanks to its material, laminate flooring is one of the most colour-fast floors there is. Compared to vinyl floors, its colours remain beautiful for years even when exposed to sunlight – perfect for rooms with large windows.

# Laminate flooring MeisterDesign. laminate BACK TO NATURE!

**Flexible and easy to use**

Thanks to the intelligent click system, all plank formats are easy to install by yourself. With its high wear class of 23/32 and comprehensive protection against humidity, laminate is extremely flexible and suitable for all living areas and commercial spaces\*

**Natural and authentic decors paired with ecological responsibility – introducing BACK TO NATURE.**

Nature is a master of form and colour. Our claim for laminate flooring from MEISTER is to get as close to this as possible. Our focus is on highly authentic and natural oak decors that look and feel just like parquet at first glance. We use sustainable processes and renewable energy sources in our production. We exclusively process renewable raw materials that are free from hazardous substances, and wood from sustainably cultivated forests. All MEISTER laminate flooring is PVC- and plasticiser-free, and certified with the Blue Angel.

Robust, easy to maintain and completely natural – laminate is all-round uncomplicated flooring that is made for healthy living and requires very little attention, allowing you to enjoy a beautiful and durable floor for many years to come – thank God it's laminate.



MeisterDesign. laminate LD 250  
Honey riverbank oak 07127 / Wood effect



MeisterDesign. laminate LS 350  
Amber oak 07002 / Wood effect

**FORMATS**



**PRODUCT STRUCTURE**

**Diamond Pro® surface**  
(with LD 55, LC 55 (S): Overlay)

The special Diamond Pro surface sees to our laminate flooring's resistance to micro-scratches and abrasion and provides additional protection against wear.

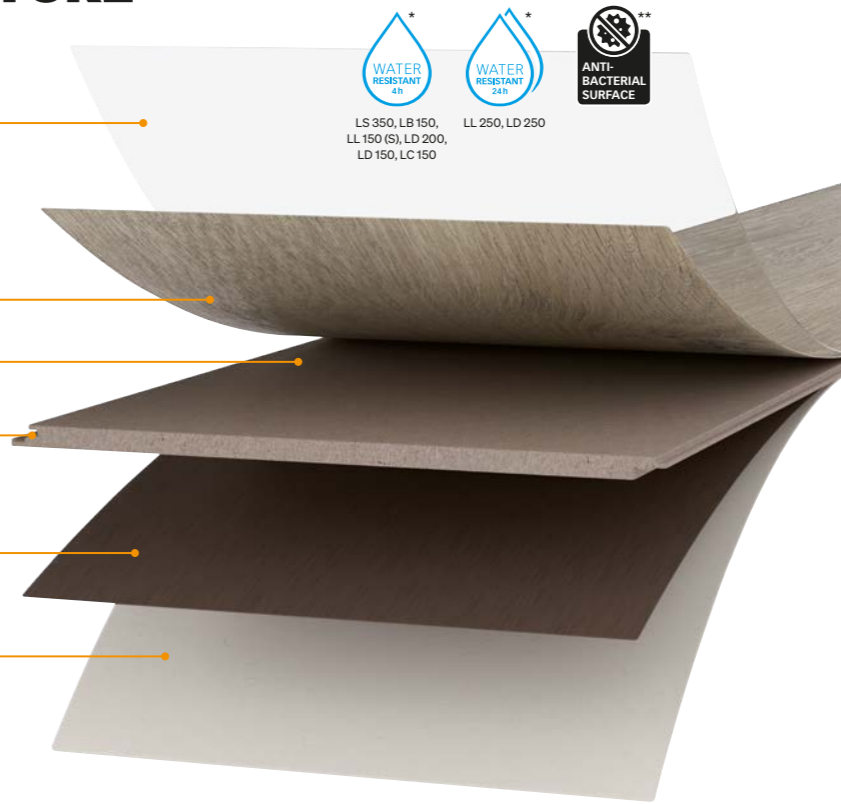
**Decor paper**

**HDF middle layer AquaSafe+**  
(with LS350, LL250, LD250)

**AquaStop-edge impregnation**  
(except LS 350, LD 55, LC 55 (S))

**Backing**

**Integrated sound absorption**  
(with LL 150 S: 2 mm PUR, with LC 55 S: 1,5 mm PUR)  
MEISTER laminate with integrated noise reduction is extra quiet and ensures a particularly attractive ambient sound.



**TECHNICAL INFORMATION**

	LS 350	LL 250	LD 250	LB 150	LL 150 (S)	LD 200	LD 150	LC 150	LD 55	LC 55 (S)
Plank look	Herringbone	Plank	Wide short plank	Tile	Plank	Wide short plank	Short plank			
Effective measurement	840 x 168 mm	2052 x 248 mm	1288 x 244 mm	857 x 398 mm	2052 x 220 mm	1288 x 244 mm	1288 x 198 mm			
Thickness	10 mm		8 mm	8 mm (10 mm)	8 mm		7 mm	7 mm (8.5 mm)		
Joint pattern	All-round micro-bevel		All-round V-bevel		All-round micro-bevel	Longitudinal V-bevel / micro-bevel on the end	-	All-round micro-bevel	-	
Wear class	23/32						23/31			
AquaSafe-system +	-	✓	✓	-	-	-	-	-	-	-
Suitable for humid rooms	4 hours	24 hours		4 hours		-				
Antistatic surface	✓	✓	✓	✓	✓	✓	✓	✓	✓	-
Diamond Pro-surface	✓	✓	✓	✓	✓	✓	✓	✓	✓	-
Sound-absorbing cushion	-	-	-	-	on request 2 mm PUR	-	-	-	-	on request 1,5 mm PUR
Click system	UniZip	5G™ Dry™	Multiclic	5G™ Dry™		Multiclic				
Warranty	25 years in living areas / 5 years in commercial areas						15 years in living areas / 5 years in commercial areas			



© 2024 by MeisterWerke Schulte GmbH  
Printed on 100% recycled paper, FSC certified  
Colours and textures may vary due to printing conditions. We reserve the right to make changes. No responsibility is assumed for errors.

MEISTER – a trademark of MeisterWerke Schulte GmbH  
Johannes-Schulte-Allee 5 / 59602 Rütten-Meiste / GERMANY  
Phone + 49 2952 816-0 / Fax + 49 2952 816-66 / www.meister.com



\* Wear class 23/31 with LC 55 (S) and LD 55

\* Can be installed in humid rooms like e.g. bathrooms. This does not include outdoor areas and wet rooms, e.g. saunas, shower cubicles, steam rooms and rooms with a floor drain.  
\*\* Tested bacteria: Staphylococcus aureus, Escherichia coli

<b>LS 350</b> Format: herringbone Thickness: 10 mm Effective measurement: 840 x 168 mm	<b>LD 250</b> Format: wide short plank Thickness: 10 mm Effective measurement: 1288 x 244 mm				
<b>LL 250</b> Format: plank Thickness: 10 mm Effective measurement: 2052 x 248 mm					
<b>LB 150</b> Format: tile Thickness: 8 mm Effective measurement: 857 x 398 mm					
<b>LL 150 (S)</b> Format: plank Thickness: 8 mm (10 mm) Effective measurement: 2052 x 220 mm					
<b>LD 200</b> Format: wide short plank Thickness: 8 mm Effective measurement: 1288 x 244 mm					
<b>LD 150</b> Format: short plank Thickness: 8 mm Effective measurement: 1288 x 198 mm					
<b>LC 150</b> Format: short plank Thickness: 8 mm Effective measurement: 1288 x 198 mm					
<b>LD 55</b> Format: short plank Thickness: 7 mm Effective measurement: 1288 x 198 mm					
<b>LC 55 (S)</b> Format: short plank Thickness: 7 mm (8.5 mm) Effective measurement: 1288 x 198 mm					

More information available here: →



LS 350 LD 250

More information available here: →



More information available here: →



More information available here: →



More information available here: →



More information available here: →



More information available here: →



More information available here: →



More information available here: →



## View flooring in your own room

Deciding on a new floor is not always easy. Light? Dark? What format? Does the flooring match the sofa? All these questions can be easily answered using our MEISTER Interior Designer, because with this tool you can view MEISTER flooring in your own room!



Go to the Interior Designer:  
<https://www.meister.com/en/service/interior-designer-new.html>

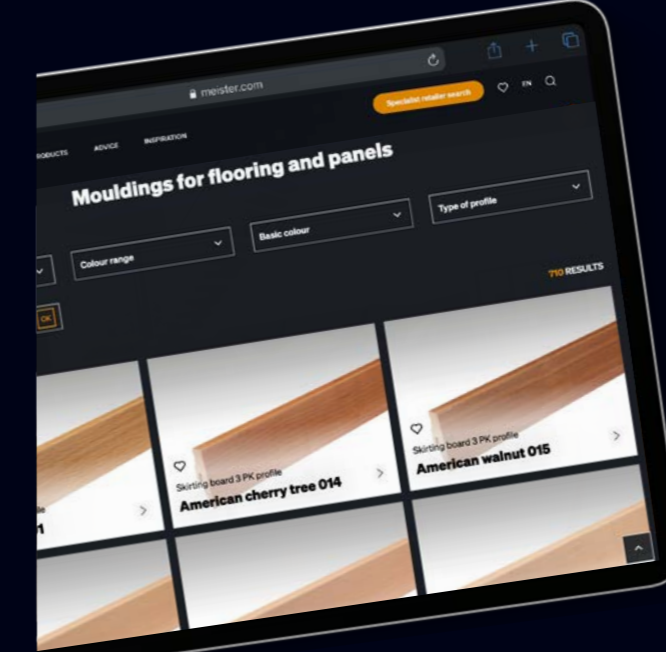


## Underlay material, mouldings and accessories: Everything from a single source

With MEISTER you can be sure that everything fits together! This turns your floor covering into a holistic furnishing solution that suits you and, above all, lasts long and reliably.



Discover our extensive range of accessories!  
[www.meister.com/en/products/accessories.html](https://www.meister.com/en/products/accessories.html)



## Advice note

### Your laminate flooring

---



---



---

### Recommended accessories

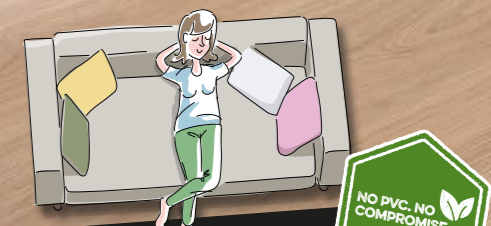
---



---

**MEISTER**

At a glance  
**Laminate flooring**  
 MeisterDesign. laminate



**THANK GOD IT'S LAMINATE.**

