

floorify®

PLANKS & TILES



Floorify Conny
Mild cleaner
1L - M001

Floorify Conny Turbo
Intensive cleaner
1L - M002



Floorify Conny Care
Restoring Cleaner
1L - M004

WHY USE THE FLOORIFY MAINTENANCE PRODUCTS?

1 TESTED THOROUGHLY

The Floorify maintenance products are specially developed for and tested on all Floorify floors and guarantee a **longer lifespan of your floor**.

2 A SAFE CHOICE

The top layer of your Floorify floor remains **unaffected** when maintained with Floorify Conny, Conny Turbo or Conny Care. Other maintenance products may contain substances that might damage your floor.

3 NO REMAINING FILM

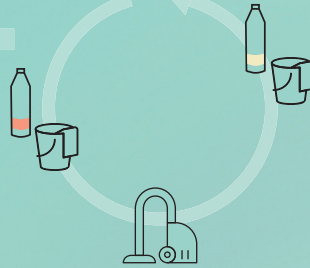
The Floorify maintenance products Conny and Conny Turbo leave no film on your floor. As such, each floor panel **retains its original beauty**.



HOW TO MAINTAIN A FLOORIFY FLOOR?

1 FIRST CLEANING AFTER INSTALLATION

Remove all coarse dirt and dust from the floor with a soft brush or vacuum cleaner (soft head). Clean the floor with water and Floorify Conny Turbo. Repeat this at least twice or as much as necessary until the water remains clear. Mop your floor with clean water.



3 PERIODIC MAINTENANCE

Clean your floor with a mop or a damp cloth. You can use a little more water in combination with the mild cleaner **Floorify Conny**. Never use more than the prescribed amount of maintenance product and leave the floor as dry as possible. Never use maintenance products that contain wax or oil. Do not use vinegar, polishes, abrasives, corrosive detergents or solvents.

2 REGULAR MAINTENANCE

Remove daily dirt by **sweeping**, dust **wiping** or **vacuuming** (soft head). Use a damp cloth or mop to easily remove stains and splashes.

TIPS

1 INSTALL A FLOOR MAT

Avoid entering dirt, water, sand...by placing an adapted **floor mat**, without a **rubber back**, on all entrances.

2 PLACE PROTECTIVE CAPS ON FURNITURE

Attach proper **protective caps** on the legs of your furniture. If you use felt pads instead, replace them regularly. Outdated, dirty felt pads attract dirt and can be a source of scratches. Place **soft wheels** (EN12590) that are suitable for vinyl floors and use a suitable desk mat under your office chairs and armchairs. Never drag heavy objects over the Floorify floor, but always lift them.

3 AVOID CONTACT WITH RUBBER

In case of prolonged contact between rubber and vinyl/pvc, a permanent dark brown discoloration may occur due to migration. We therefore recommend you to **replace** any **rubber protection** on furniture and on objects on your floor.

4 HOW TO REMOVE STUBBORN STAINS?

Remove loose dirt and dust from your floor with a soft brush or vacuum cleaner (soft head). Then mop your floor with water and the intensive cleaner **Floorify Conny Turbo**. Let this soak in for ten minutes and then remove the loose dirt with a clean, damp mop. Mop your floor with clean water.

5 HOW TO SLOW DOWN NATURAL AGEING?

First clean your floor with Floorify Conny Turbo as described in tip 4. Then mop with water and the restoring cleaner **Floorify Conny Care**. Follow the instructions on the bottle. Conny Care leaves a matt protective layer on your floor that makes superficial scratches or streaks and natural traces of ageing less visible. In addition, this layer extends the lifespan of your floor.

